

**Nadja Lamei**  
Statistics Austria,  
Directorate Social Statistics

## How to measure material well-being Wie lässt sich materieller Wohlstand statistisch messen?

Statistics Day 2017 - 2 October, 2017

“Social Statistics in the European Statistical System in the context of rapidly changing societies”

## Source:

EU-SILC - European Community Statistics on Income and Living Conditions

2004 start of the integrated rotational design

Now: 28 EU-MS + Norway, Island, Turkey, Switzerland, Macedonia, Serbia and Montenegro,....



## Concepts:

- **Output** harmonization
- **Canberra Group Recommendations** to measure Household income:
  - Only income, no stocks
  - Annual income
  - All sources
- OECD vs. **EU-scale** for equivalised income
- Risk of poverty -> **Risk of poverty or social exclusion**

## Data and methods:

- Survey and administrative data combined (where possible)
- Survey all household members 16+ vs. selected respondent design
- CAPI, CATI , CAWI (...)
- Optimizing fieldwork, sampling, weighting ,...

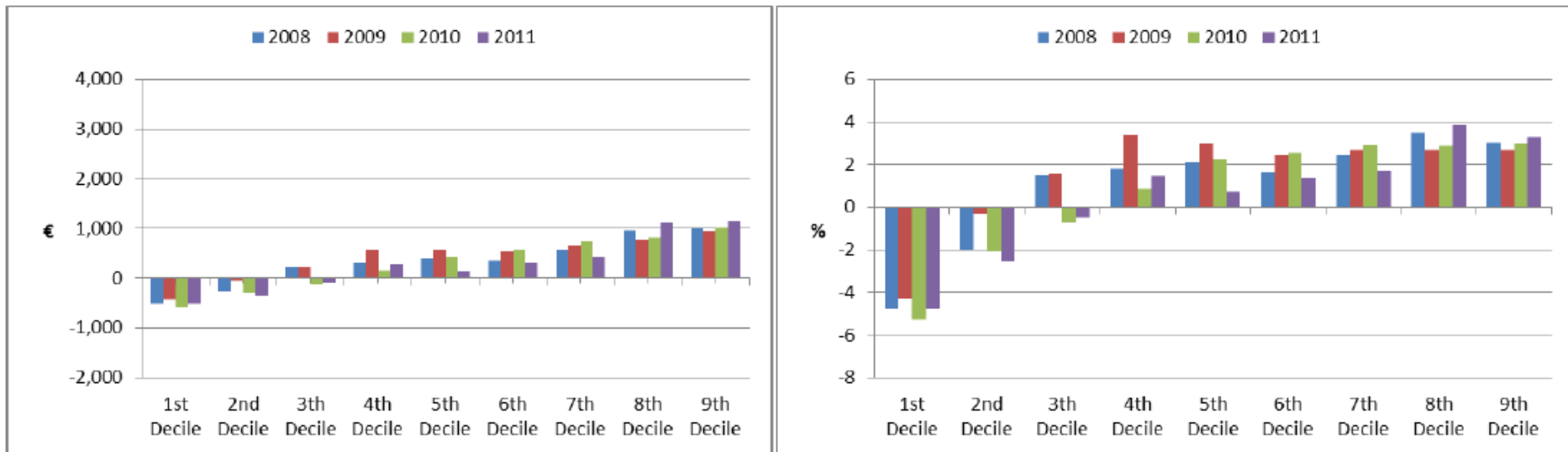
Income components on personal level	
	PY010 Income from employment
+	PY050 Income from selfemployment
+	PY090 Old-age benefits
+	PY100 Unemployment benefits
+	PY110 Survivor's benefits
+	PY120 Sickness benefits
+	PY130 Disability benefits
+	PY140 Education related benefits
+	PY080 Pension from individual private plans
=	<b>Sum of income on individual level</b>
Income components on household level	
+	HY040 Income from rental of property of land
+	HY050 Family related benefits
+	HY060 social exclusion benefits not elsewhere classified
+	HY070 Housing allowances
+	HY080 Inter household cash transfers received
+	HY090 Interests, dividends, ...
+	HY110 Income received by persons aged under 16
=	<b>Sum of income on household level</b>
-	HY130 Inter-household transfers paid
-	HY145 Repayments/receipts for tax adjustment
=	<b>HY020 Household income</b>

 Income information mainly from register  
 Income information from survey

# Impact of register data on income distribution

Household income distribution changes due to better coverage of low and high income in several components!

Figure 2: Absolute and relative deviations of equivalised disposable incomes (Register data minus questionnaire data) at deciles



Source: Statistics Austria, EU-SILC 2008-2011. Weighted results.

**Table 20: S80/S20 and Gini indices 2008-2011**

	2008		2009		2010		2011	
	Questionnaire	RD	Questionnaire	RD	Questionnaire	RD	Questionnaire	RD
S80/S20	3.7	4.2	3.7	4.2	3.7	4.3	3.8	4.1
Gini	26.1	27.7	25.6	27.5	26.1	28.3	26.3	27.4

**Table 21: Persons at-risk of-poverty after social transfers 2008-2011**

	2008		2009		2010		2011	
	Questionnaire	RD	Questionnaire	RD	Questionnaire	RD	Questionnaire	RD
at-risk-of-poverty after social transfers, %	12.4	15.2	11.9	14.5	12.1	14.7	12.6	14.5
at-risk-of-poverty after social transfers (persons)	1,018,472	1,252,237	983,656	1,201,025	1,003,935	1,213,915	1,051,383	1,206,894
60% risk-of-poverty threshold, Euro	11,406	11,648	11,935	12,281	12,371	12,635	12,791	12,878
poverty gap, %	15.3	19.9	16.9	19.2	17.2	21.8	19.0	19.1

Source: Statistics Austria. EU-SILC 2008-2011. Based on weighted data.

RD..... register data.

**Table 22: Europa 2020 indicators 2008 - 2011**

frequencies (in 1,000s, weighted)	2008		2009		2010		2011	
	Questionnaire	RD	Questionnaire	RD	Questionnaire	RD	Questionnaire	RD
at risk of poverty or social exclusion	1,535	1,699	1,425	1,577	1,373	1,566	1,407	1,593
at risk of poverty after social transfers	1,018	1,252	984	1,201	1,004	1,214	1,051	1,207
living in households with very low work intensity	506	475	487	452	497	497	519	546
severely materially deprived	524	485	395	376	356	353	325	333

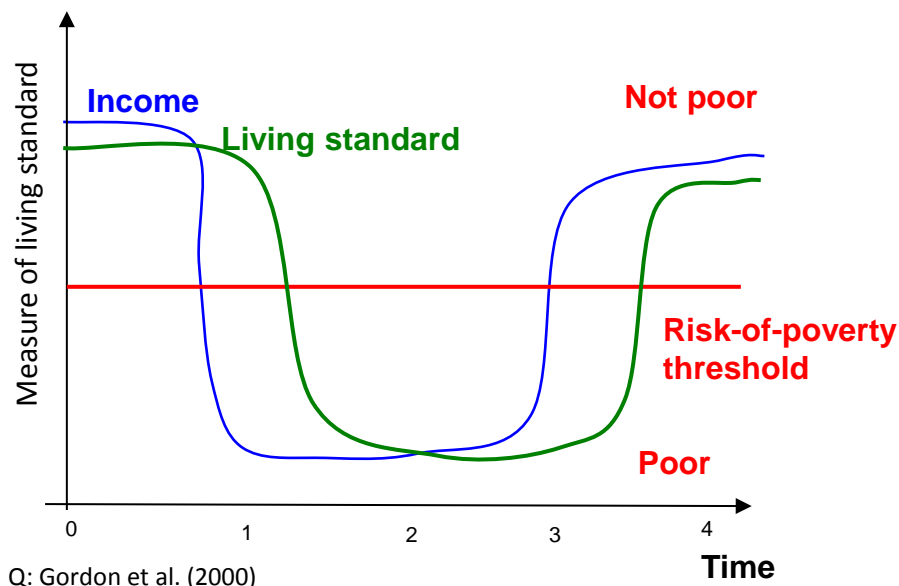
  

in %	2008		2009		2010		2011	
	Questionnaire	RD	Questionnaire	RD	Questionnaire	RD	Questionnaire	RD
at risk of poverty or social exclusion	16.6	18.9	16.6	18.9	16.9	19.2	16.9	19.2
at risk of poverty after social transfers	12.1	14.7	12.1	14.7	12.6	14.5	12.6	14.5
living in households with very low work intensity								
as % of the total population	6.0	6.0	6.0	6.0	6.2	6.6	6.2	6.6
in % of people with age < 60 <sup>1</sup>	7.7	7.8	7.7	7.8	8.0	8.5	8.0	8.5
severely materially deprived	4.3	4.3	4.3	4.3	3.9	4.0	3.9	4.0

Source: Statistics Austria. EU-SILC 2008-2011. Based on weighted data.

RD..... register data.

# Household income as a proxy for living standard...



... should be supplemented by **direct measures of living standard and / or costs of living** (multidimensional aspects, income-consumption-wealth,...)

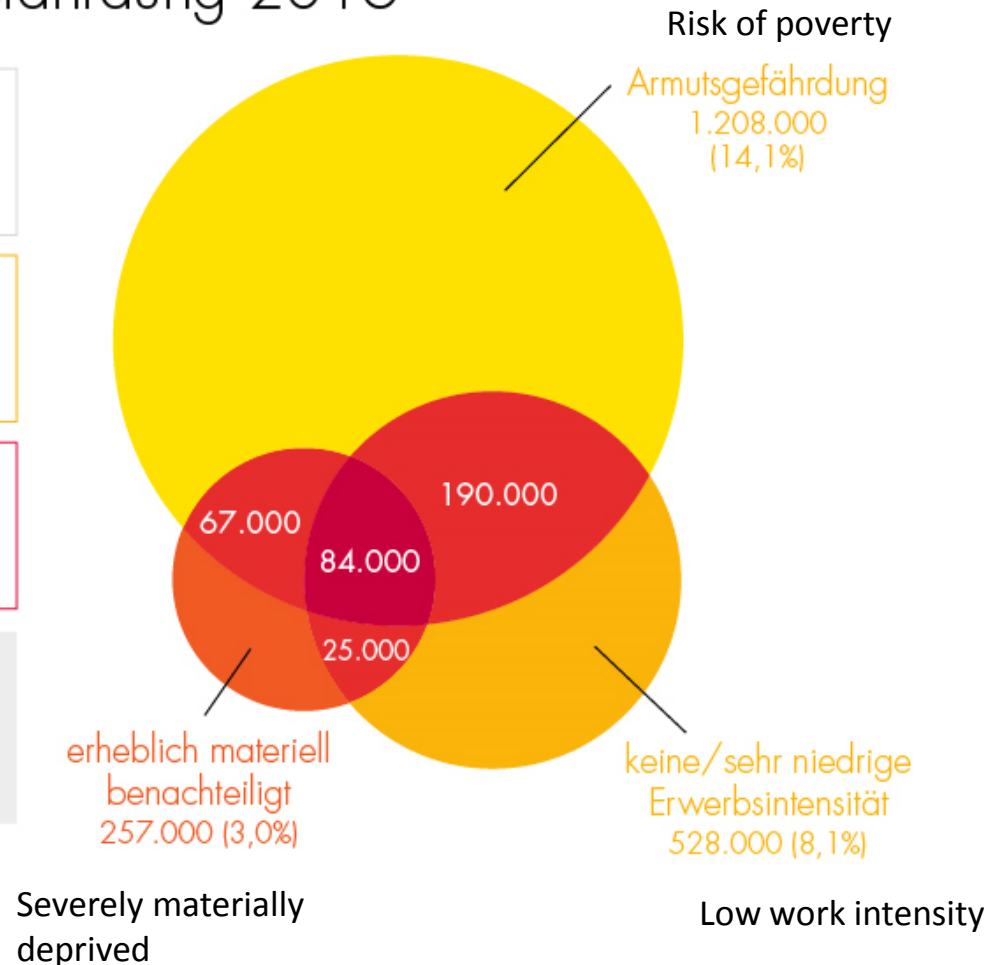
... has to be evaluated also in a **longitudinal perspective** (changes, entries/exits into poverty)

## Armut- oder Ausgrenzungsgefährdung 2016

Risk of poverty or social exclusion



Quelle und Grafik: STATISTIK AUSTRIA, EU-SILC 2016, erstellt am 02.05.2017

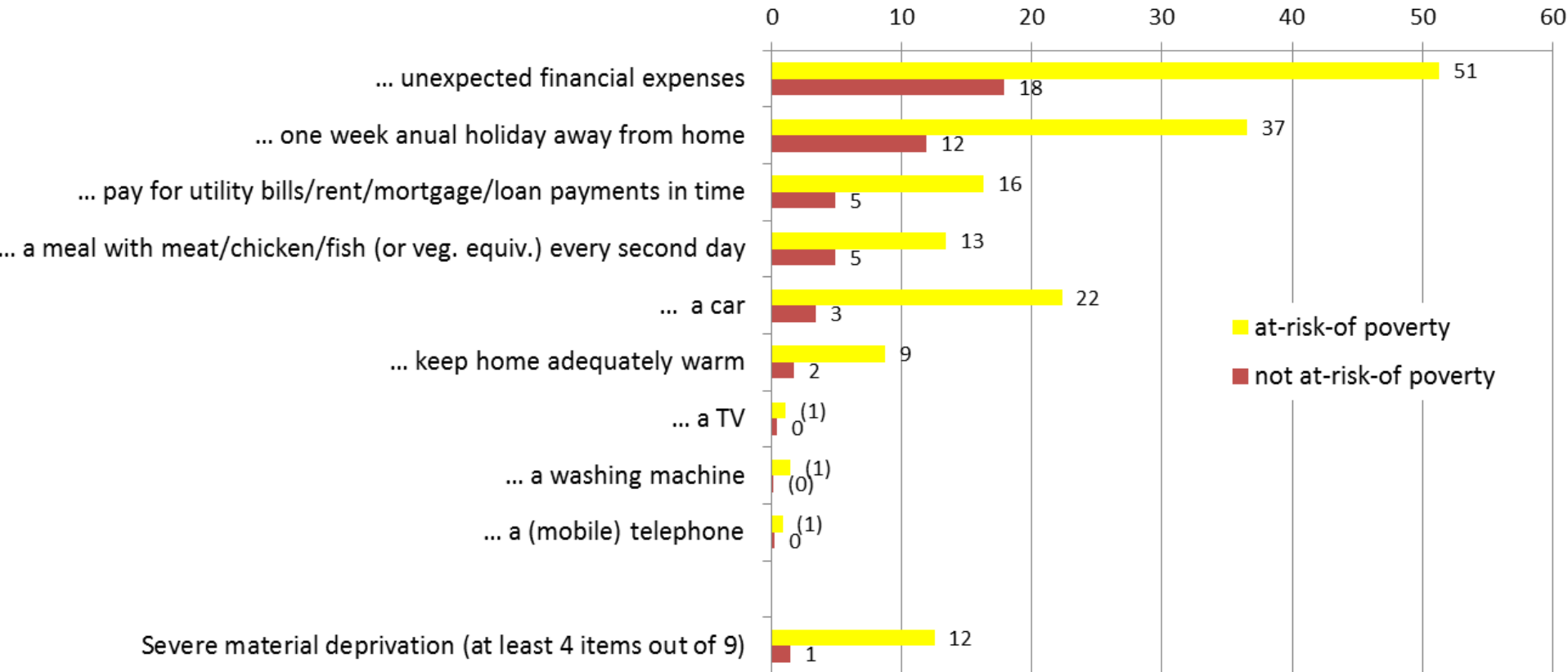




# Severe material deprivation by risk of poverty

Household cannot afford...

In %



Source: Statistics Austria. EU-SILC 2016.

## **New surveying and questionnaire tool at Statistics Austria:**

- STATsurv as a common platform for all household and personal surveys
- Principle of modularization of questionnaires
- New survey mode CAWI

## **Conceptual changes :**

- New material deprivation items and indicators
- New social target after Europa 2020?
- ICW: survey modules, linkage on micro-level, micro-macro (SILC/HBS/... - NA)

## **Revision of legal background - > Integrated European Social Statistics**

**Ever faster, many stakeholders!**

*Please address queries to:  
Nadja Lamei*

*Contact information:  
Guglgasse 13, 1110 Vienna  
phone: +43 (1) 71128-7336  
nadja.lamei@statistik.gv.at*

# How to measure material well-being

## Wie lässt sich materieller Wohlstand statistisch messen?