

Standard-documentation Meta information

(Definitions, comments, methods, quality)

on

Microcensus – Ad-hoc module 2012 – „Transition from work to retirement“

This documentation is valid for the reference period:

2012

Status: **27.01.2014**



STATISTICS AUSTRIA
Bundesanstalt Statistik Österreich
A-1110 Vienna, Guglgasse 13
Phone: +43-1-71128-0
www.statistik.at

Directorate Social Statistics

Organizational unit Demography, Health, Labour Market

Contact person:
Mag. Beatrix Wiedenhofer-Galik
Phone +43-1-71128-8287
E-Mail:
beatrix.wiedenhofer-galik@statistik.gv.at

Contact person:
Mag. Katrin Baumgartner
Phone +43-1-71128-7211
E-Mail:
katrin.baumgartner@statistik.gv.at

Contact person:
Dr. Erika Baldaszi
Phone +43-1-71128-7263
E-Mail:
erika.baldaszi@statistik.gv.at

Executive Summary

Following the [Commission Regulation \(EC\) No 249/211](#) the LFS ad-hoc module on the transition from work to retirement had to be carried out in 2012. This Regulation determines a detailed list of variables to be collected in 2012. The concrete formulation of the questions and a possible enlargement of the questionnaire can be determined by the EU Member States, nevertheless international comparison has to be considered. The Austrian Labour Force Survey is implemented according to the national Regulation on Employment and Housing Statistics ([EWStV, BGBl. II Nr. 111/2010](#)). The questions related to the LFS module 2012 were added after the core program of the LFS. The module was only addressed to those households, who were interviewed for the first time within the Microcensus. Answering the questions of the LFS module 2012 was compulsory, as it is the case for the core program.

At national as well as European level data concerning the transition out from the labour market and into retirement is of high importance. In the frame of the Europe 2020 strategy, the increase of the labour market participation of all population groups, also elderly persons, has been defined as a relevant target. Another decision taken at European level was the implementation of the LFS module on the transition from work to retirement in the EU Member States. In 2006 a module concerning this topic was carried out within the LFS for the first time. Main findings obtained from the module 2006 were included in the new survey, which was conducted in almost all EU Member States.

In order to receive more detailed information concerning the transition from work to retirement, in Austria additional questions were included in the national module questionnaire. These supplementary questions are based on a national Regulation, namely the [„Statistik über den Übergang vom Erwerbsleben in den Ruhestand im Jahr 2012 \(Ruhestandsstatistikverordnung 2012\), BGBl. II Nr. 64/2012“](#), legislated by the Austrian Federal Ministry of Labour, Social Affairs and Consumer Protection. In § 5 of this Regulation it is stated, that the participation at the module was compulsory. These additional national variables were financed by the Austrian Federal Ministry.

The sample frame for the Austrian LFS module 2012 was represented by the Microcensus sample of 2012. The sample of the Microcensus consists of nine approximately equal-sized federal state samples (exceptions: Burgenland with a smaller sample size and Vienna with a larger sample size). Households are the primary sampling unit and they are selected randomly in a one-step sample from the “Zentrales Melderegister” – ZMR (i.e. register of residents). Each household remains for five surveys in the sample (fifth rotation). The first survey is carried out by face-to-face interview (CAPI, Computer Assisted Personal Interviewing). The four follow-up surveys are carried out by Computer Assisted Telephone Interviewing (CATI).

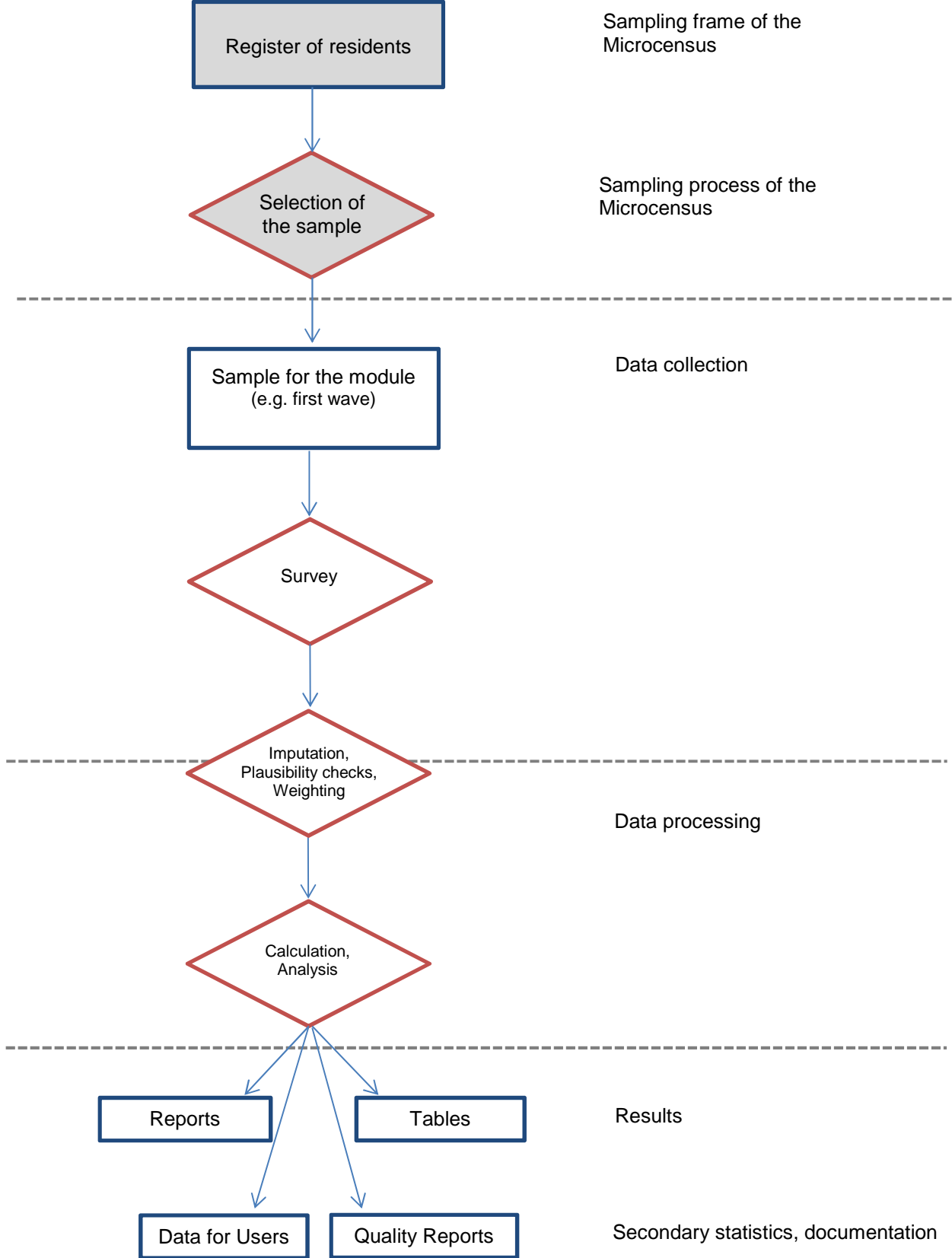
Target group of the LFS module 2012 consisted of all persons aged 50 to 69 years living in private households and currently working or having worked after the age of 50, who were interviewed for the first time (first wave) in the frame of the Labour Force Survey. As answering the survey was compulsory, the response rate was 99,9%. In 2012, 7,955 persons answered the questions of the ad-hoc module. Proxy interviews by other household members were – as in the core program – allowed. The share of proxy interviews amounted to 18.1% of the target group. The interviews were spread over all calendar weeks of the year 2012.

The collected data was checked for completeness and plausibility. Subsequently, implausible and missing data were imputed by hot deck method. Finally, as well as concerning the core program of the labour force survey, survey weights were calibrated so that the results of the ad-hoc module agree to known population totals.

The results of this ad-hoc module were published in the publication [„Übergang vom Erwerbsleben in den Ruhestand. Modul der Arbeitskräfteerhebung 2012“](#) (transition from work to retirement, LFS module 2012) in October 2013.

Figure 1 describes the process of data production within the framework of the Microcensus labour force survey. In this standard publication, the individual steps from sampling to the presentation of the results are explained in more detail.

Figure 1: Process of data production of Ad-hoc-Module 2012 data



**Microcensus – Ad-hoc-Module 2012 “Transition from work to retirement” –
Main Features**

Subject Matter	Survey regarding plans in relation to the termination of working life, individual paths concerning the transition from work to retirement, reasons for prolonging working life, main reason for not staying longer at work, questions concerning received pensions
Population	Persons aged 50 to 69 years living in private households, currently working or having worked after the age of 50 (2012: ca. 1 8 m persons)
Type of statistics	Primary statistics
Data sources/Survey techniques	Sample survey: computer-assisted
Reference period or due day	2012
Periodicity	Ad hoc
Survey participation (in case of a survey)	Obligatory
Main legal acts	National: Statistik über den Übergang vom Erwerbsleben in den Ruhestand im Jahr 2012 (Ruhestandsstatistikverordnung 2012), BGBl. II Nr. 64/2012 EU: Commission Regulation (EC) No 249/211
Most detailed regional breakdown	NUTS 2
Availability of results	23 October 2013
Other	Partial Sample